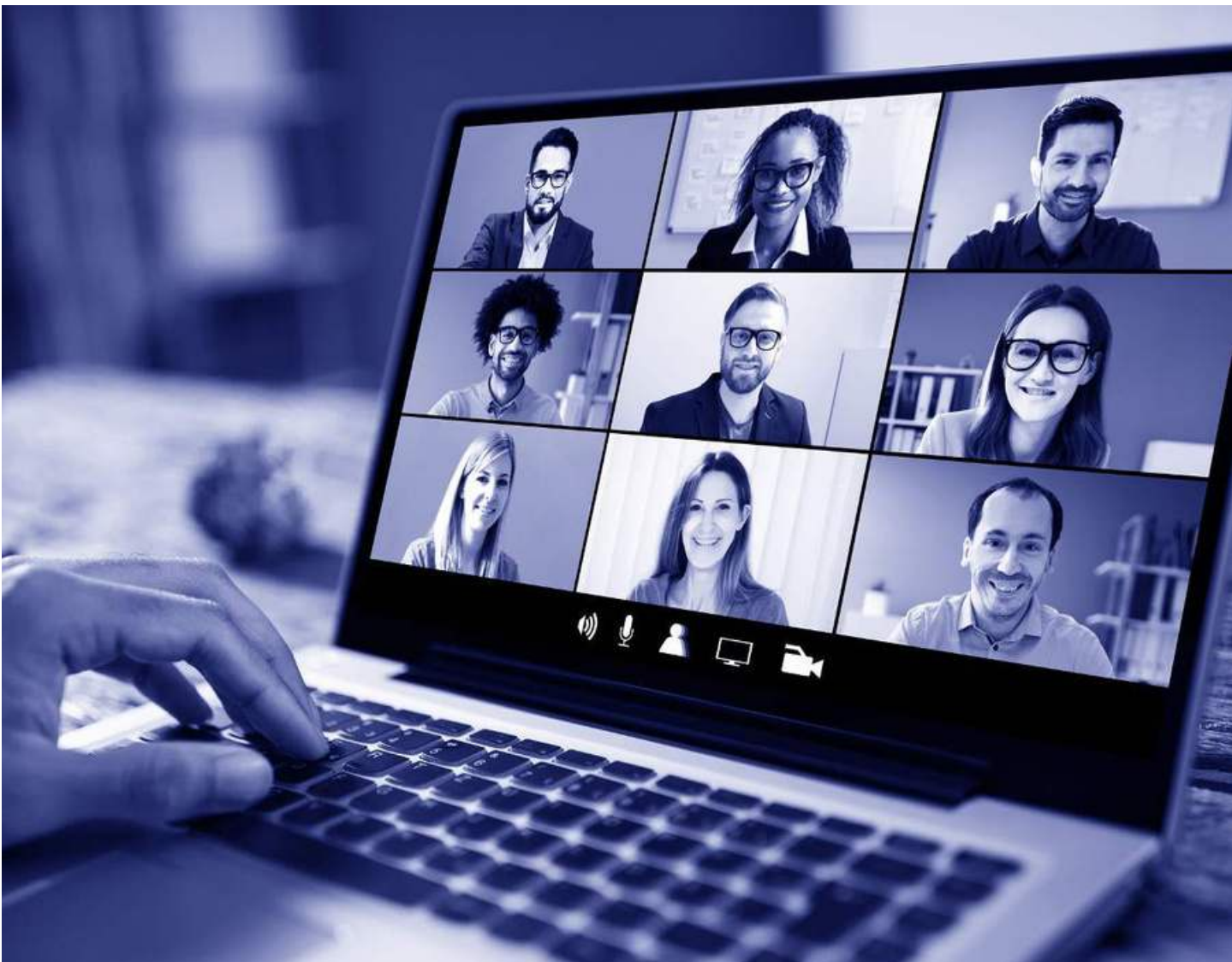


# Pre-Election

---

Inspire more candidates to run and more voters to vote



# A Complete Pre-Election Solution

---

Pre-Election is a secure and user-friendly solution used to support the entire process related to candidate nomination. The system integrates and provides documentation for the different steps of the process, minimizing administration and allowing both candidates and voters an optimal election campaign from start to finish.

The Pre-Election system ensures compliance with all relevant statutory nomination requirements. This eases the administrative burden for the organization responsible for running the election, reduces the risk of error, and creates legitimacy around the nomination process.

Previous experience from using Pre-Election shows that the system inspires more candidates to run and more voters to vote. By creating a trustworthy and consistent overview of the nominated candidates, voters simply find it easier to make their choice and this increases voter turnout.

Moreover, the pre-election system is easy to use for candidates, election organisers as well as third party auditing companies. This leads to a smooth and documented election process where energy can be used on relevant political themes rather than administrative procedures.

## Pre Election gives you:



More candidates



High satisfaction with the candidacy process



Higher turnout



Large savings of internal resources

# Feature Overview

---

With more than 300 different settings, each pre-election system can be adjusted to cater to different nomination criteria and the system enables the organization behind the candidate to brand itself using a unique graphical look and feel.

Assembly Voting prepares (or assists)

the individual elements in the candidate module of Pre-Election, such as validation data, system set-up, and candidate information.

A test is always executed before the opening of the module and the system is set up according to the electoral regulations and designed with the client organizing the election as the originator.

## Configurations

Assembly Voting configures the candidate module of Assembly Pre-Election to suit your rules.

### Entities

List, candidates, supporters (nominators).  
Groups, regions, and districts.

### Validation parameters

Digital signature, registration of (member) data (e.g. member number combined with the birth date, etc.)

### Additional validation parameters

Number of nominators (for lists, for candidates).

### Period of registration

Date and time for opening and closing by timer function.

### Data in presentation

Required data (imported from member database and/or from candidate registration) and non-required data e.g. picture, text, video, etc.

### Confirmation procedures

Confirmation texts for registration, for confirmation of validated candidacy and ongoing status notifications, e.g. validated nominator.

### Publishing of lists and candidates

Open when registered, open when confirmed, open at a specific date/time.

### Editing rules

Candidate log-in, definition of data to be edited, closing date and time for editing the candidate profile.

### Invitation function

Link to invite potential nominators (when logged in).

### Find your candidate

Typically 8-12 statements to find match between voter and candidate. Candidates can answer when logged in.

### Social media

Integration of list or candidate profiles with social media, e.g. Facebook, LinkedIn, YouTube, etc.

### Branding

Visual identity of the Candidate module.

### Content

Static pages, e.g. "About candidacy", "Statutory requirements", etc.

# Overview of The Pre-Election System

## Overview

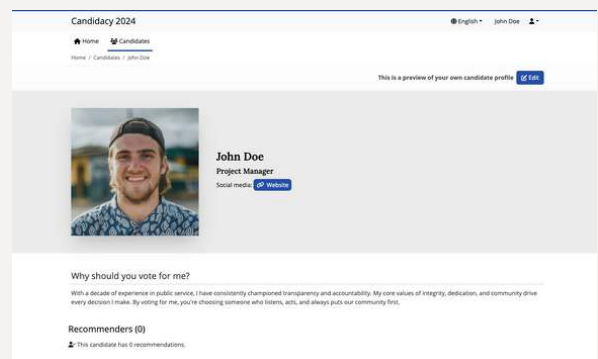
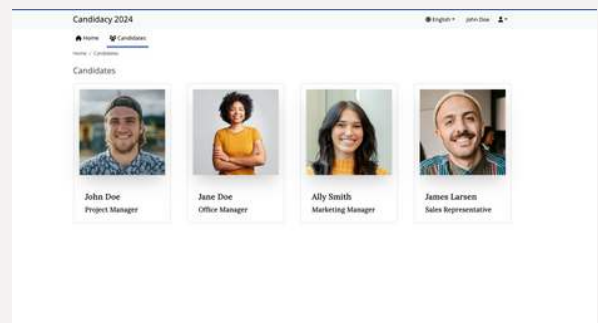
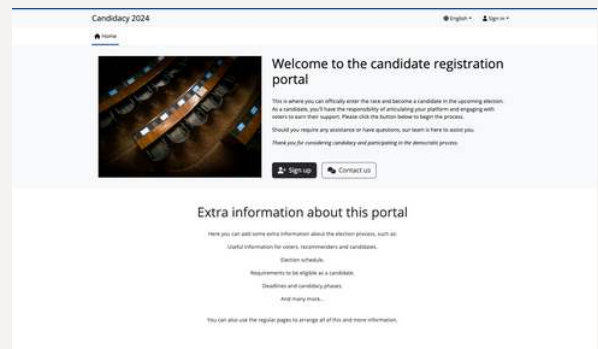
The candidate module allows candidates to stand as candidates or be nominated, create a profile, possibility to get recommenders and be presented to voters.

## List of candidates

Here a list of the candidates are presented when published, providing the voting overview and the opportunity to read more about the candidates.

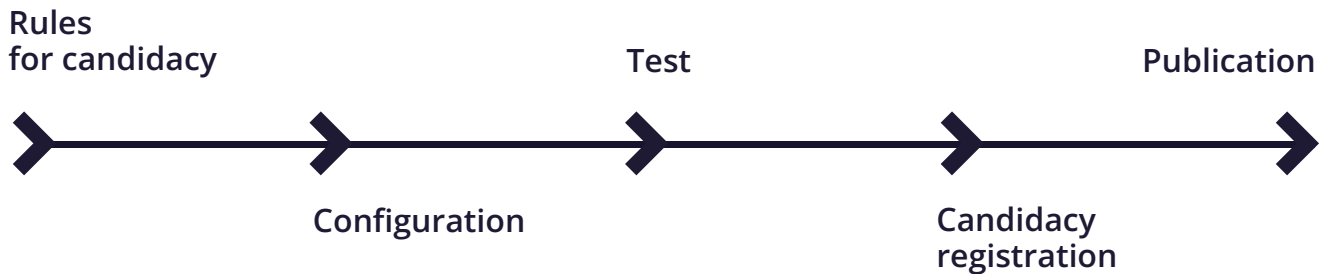
## Candidate profile

Here you see a detailed description of each candidate. Candidates can edit their profile as long as editing is open.



# The Process

---



Pre Election is delivered as a SaaS (Software as a Service) solution where Assembly Voting configures and operates the system during the process. Backend access is possible.

## Phase 1 - Configuration

- Basic nomination requirements
- Configuration of settings and data upload
- Graphical identity
- Test and documentation with third-party auditor

## Phase 2 - Registration of candidates

- Creation of candidate profiles including log-in
- Automatic validation of candidates and supporters
- Confirmation procedures
- Profile editing

## Phase 3 - Voter Access

- Final statement of candidates
- Close editing of candidate profiles
- Open voter access
- System and performance documentation

# About Assembly Voting

---

Assembly Voting was the first provider of digital elections in Denmark. Today, we have grown to become a global leading election technology provider across Europe, the USA and the rest of the world.

Assembly Voting is based on the idea of strengthening democratic participation in society and associations, through the

integration of fundamental democratic processes with documented secure and user-friendly technologies. Assembly Voting provides mathematically proven and fully documented election solutions for ministries, municipalities, professional organizations, companies, associations, etc.

## Primary system

### Electa

The next-generation secure and end-to-end verifiable online voting system.

## Additional systems

### Pre Election

Registration, validation and presentation of candidates.

### Assist

Add-on modules that connect with our voting system to increase participation and deliver support during the election.

## Facts

- First digital legislative and statutory elections in Denmark (2001)
- More than 1000 clients across 75 countries
- 6,000+ elections
- 35 million+ voters
- 35,000+ candidate registrations
- Full service, partner and self-service solutions



Contact our sales department to learn more about how we can implement your next candidacy process.